

# USER MANUAL – BEDJET 3 & BEDJET 3 MINI

Questions? Email [info@bedjet.com](mailto:info@bedjet.com) or call (401) 404-5250

We are here to help, please call us for advice!



## Bedroom Forced Air Climate Comfort System



This device is for residential home use only. It is not intended to be used in commercial, industrial, or human medical settings.

**PLEASE READ THESE INSTRUCTIONS CAREFULLY BEFORE ATTEMPTING TO INSTALL, OPERATE OR MAINTAIN THE PRODUCT. PROTECT YOURSELF AND OTHERS BY OBSERVING ALL SAFETY INFORMATION. FAILURE TO FOLLOW INSTRUCTIONS COULD RESULT IN PERSONAL INJURY OR PROPERTY DAMAGE!**

***SAVE THESE INSTRUCTIONS***



# USER MANUAL – BEDJET 3 & BEDJET 3 MINI

Questions? Email [info@bedjet.com](mailto:info@bedjet.com) or call (401) 404-5250

We are here to help, please call us for advice!

## Letter from the Inventor:

Thank you for purchasing a BedJet! I'm Mark, the inventor and founder of the company. When I went on ABC's *Shark Tank* television show some years ago, they told me nobody would ever want a BedJet.

Now just a few years later I am so incredibly grateful our little start-up company in Rhode Island has blossomed into a great American success story. BedJet is now the #1 bestselling and best reviewed product in America for bedroom climate comfort systems, ahead of even the billion-dollar mattress companies. I am forever thankful for all the success and support from you, our BedJet owners.

Treating our BedJet owners just like we sold something to a neighbor or friend is so very important to me. I believe it is possible to build a profitable company while still doing right by your customers with showing them love, appreciation, and world class customer service. This letter is my personal commitment that we will take great care of you to ensure you are happy with your BedJet experience. I ask that you please give us the opportunity to right any issues you may experience and we promise to put your needs and interests first.

In support of my personal commitment to your satisfaction, I offer my own direct contact information below. If our BedJet Customer Care team ever fails to meet your expectations in any way, please don't hesitate to reach out to me directly. You have my promise to set things right.

We also understand that the BedJet is a luxury product and that there are many in the world who cannot afford such luxuries. In recognition, know that your support has enabled BedJet to donate over \$2.5 million to charities serving underprivileged families with basic human needs such as food security, homelessness, mental health, and education.

If you love your BedJet, please do us a huge favor and spread the word among your friends and family, as we still don't have the marketing budgets of the big mattress companies.

With the deepest regard and appreciation for you, our customer,



Mark Aramli  
Chief BedJetter & CEO

Office of the CEO:  
[maramli@bedjet.com](mailto:maramli@bedjet.com)  
+1.401.404.5250 ext. 102



# USER MANUAL – BEDJET 3 & BEDJET 3 MINI

Questions? Email [info@bedjet.com](mailto:info@bedjet.com) or call (401) 404-5250

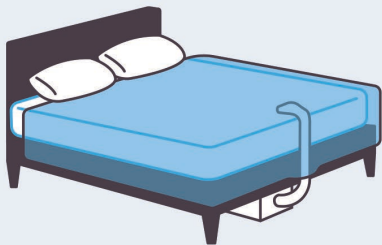
We are here to help, please call us for advice!

## Personalized Sleep Solutions

BedJet can be customized to your individual sleeping needs whether you sleep alone or with a partner. Before starting installation, review the options below to ensure you have ordered the very best setup for your needs. Important definitions:

- **Single Zone** installs have 1 BedJet on the bed. BedJet Cloud Sheet is optional and ordered separately, but is recommended for the very best experience.
- **Dual Zone** bundles have 2 BedJets on the same bed. BedJet Cloud Sheet (Dual Zone) comes standard.

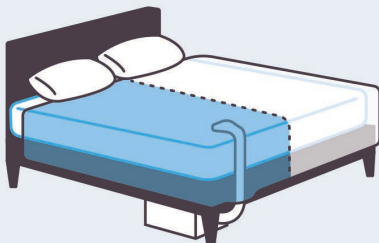
### BedJet Buyer's Guide



#### Single Temperature Zone – Entire Bed

1 BedJet + 1 Single Zone Cloud Sheet (optional)

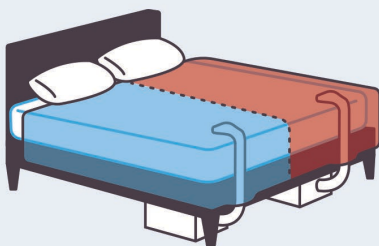
Best for solo sleepers or couples who share the same bed temperature preferences.



#### Single Temperature Zone – Half of Bed

1 BedJet + 1 Dual Zone Cloud Sheet (required)

Best for couples where one sleeper needs some extra cooling or warming and the other is fine with room temp.



#### Dual Temperature Zone – Each Half of Bed

2 BedJets + 1 Dual Zone Cloud Sheet (included\*)

Best for couples who have very different temperature preferences and want independent control on each side.

\*Cloud Sheet included in Dual Zone System purchases.



# USER MANUAL – BEDJET 3 & BEDJET 3 MINI

Questions? Email [info@bedjet.com](mailto:info@bedjet.com) or call (401) 404-5250

We are here to help, please call us for advice!

## Pre-Installation Information

### About BedJet

BedJet is a forced air climate comfort system designed with the latest technology just for your bedroom. BedJet is designed to be used as a permanent room air comfort device. The BedJet air can also be streamed directly into your bed for even more personalized temperature control while sleeping.



*BedJet 3 (left) and BedJet 3 Mini (right).*

### Bedding Sheet Requirements

When installing the air outlet onto a bed, BedJet gently sends air directly into your sleeping layer. The BedJet requires a typical top sheet or comforter for proper cooling and warming operation on a bed. The top sheet or comforter helps trap and distribute the BedJet air flow within the bed.

Top sheet or comforter requirements are super simple. Just use any bedding material type (cotton, cotton blends, microfiber, etc.) with a 250 thread count weave or higher. For the very best BedJet experience and most even distribution of cooling/warming air, the BedJet Cloud Sheet is recommended in place of a typical top sheet.



Low quality top sheets with thread count below 200, loose knit sheet weaves such as jersey knit or flannel, and performance “cooling” top sheets made with synthetic fibers will result in a sub-optimal BedJet experience. Loose knit blankets with no top sheet or no comforter will also result in sub-optimal experience. ***These types of bedding will allow the BedJet’s air to escape at the bottom of the bed near the nozzle and only cool/warm your feet instead of circulating through the whole bed.***



# USER MANUAL – BEDJET 3 & BEDJET 3 MINI

Questions? Email [info@bedjet.com](mailto:info@bedjet.com) or call (401) 404-5250

We are here to help, please call us for advice!

## Pre-Installation Checklist

Before installing your BedJet, please verify the following parts are included in your BedJet 3 package. Please retain packaging in case of return.



BedJet 3 or BedJet 3 Mini  
Base Unit



Adjustable Height  
Mattress Mount Assembly



Remote Control with LCD Screen  
with 2 AA Batteries



Air Hose



Air Nozzle

**Handheld remote not included with BedJet 3 App Control Only model APP-3-800NA, but available as optional upgrade purchase.**

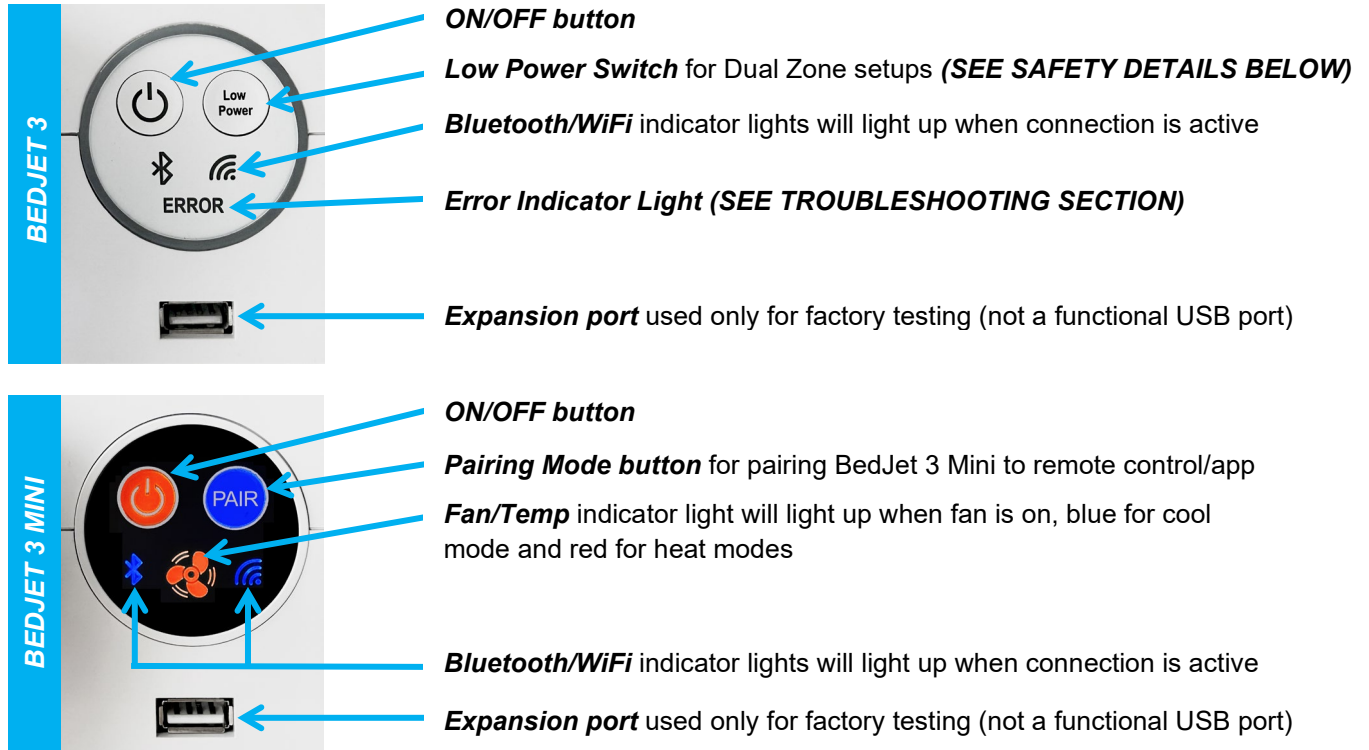


# USER MANUAL – BEDJET 3 & BEDJET 3 MINI

Questions? Email [info@bedjet.com](mailto:info@bedjet.com) or call (401) 404-5250

We are here to help, please call us for advice!

## Status & Control Panel



### Low Power Switch (Not Applicable for BedJet 3 Mini):

Follow the setup instructions on the remote control or App and the proper setting for the Low Power switch will be made for you automatically.

Low Power **must be set ON for setups with two BedJet 3 units in the same bedroom** (such as Dual Zone Systems) and **only impacts Heating mode power**. Users with a single BedJet on a twin bed should also set the Low Power switch ON. Installations where only one BedJet is used in a bedroom on full, queen- or king-sized bed should leave Low Power Switch OFF to enjoy the full power comfort of the system. Low Power not applicable for BedJet 3 Mini systems.

**⚠ WARNING (Not applicable for BedJet 3 Mini): Failure to comply with the correct Low Power ON switch setting with more than one BedJet 3 unit installed on the same bedroom AC branch circuit may result in overloaded electrical circuit, circuit breaker trips, or electrical hazard. Never use more than one BedJet 3 unit on the same household AC circuit in same bed without Low Power switch ON.**



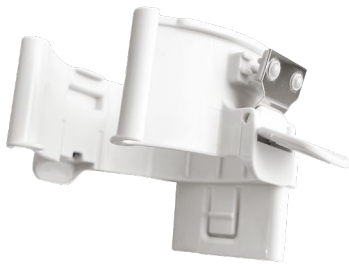
# USER MANUAL – BEDJET 3 & BEDJET 3 MINI

Questions? Email [info@bedjet.com](mailto:info@bedjet.com) or call (401) 404-5250

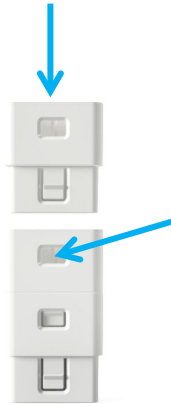
We are here to help, please call us for advice!

## Quick Install Guide

- 1) Locate parts for Mattress Mount Assembly. The Mattress Mount Assembly holds the Air Hose up against your mattress and comes in multiple pieces:



Hose Grip with  
2 Sheet Clamps

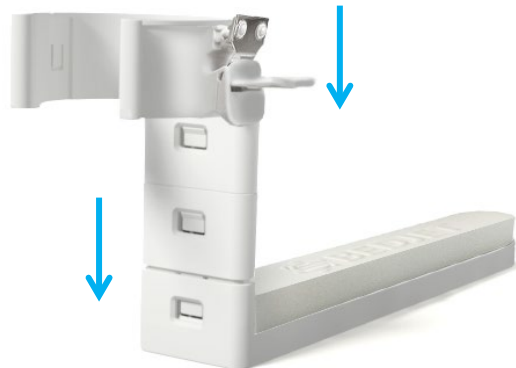


Height Extension Links:  
slide in to snap lock, press  
tabs to release and pull



Mattress Mount Base with  
foam retention block

- 2) Assemble the Mattress Mount parts using the Height Extension Links as shown below. All parts should snap-lock together. Enough Height Extension Links are included for mattresses up to 20" thick. Start with installing 2 or 3 Height Extension Links on your first try, more can be added or removed later as needed.



# USER MANUAL – BEDJET 3 & BEDJET 3 MINI

Questions? Email [info@bedjet.com](mailto:info@bedjet.com) or call (401) 404-5250

We are here to help, please call us for advice!

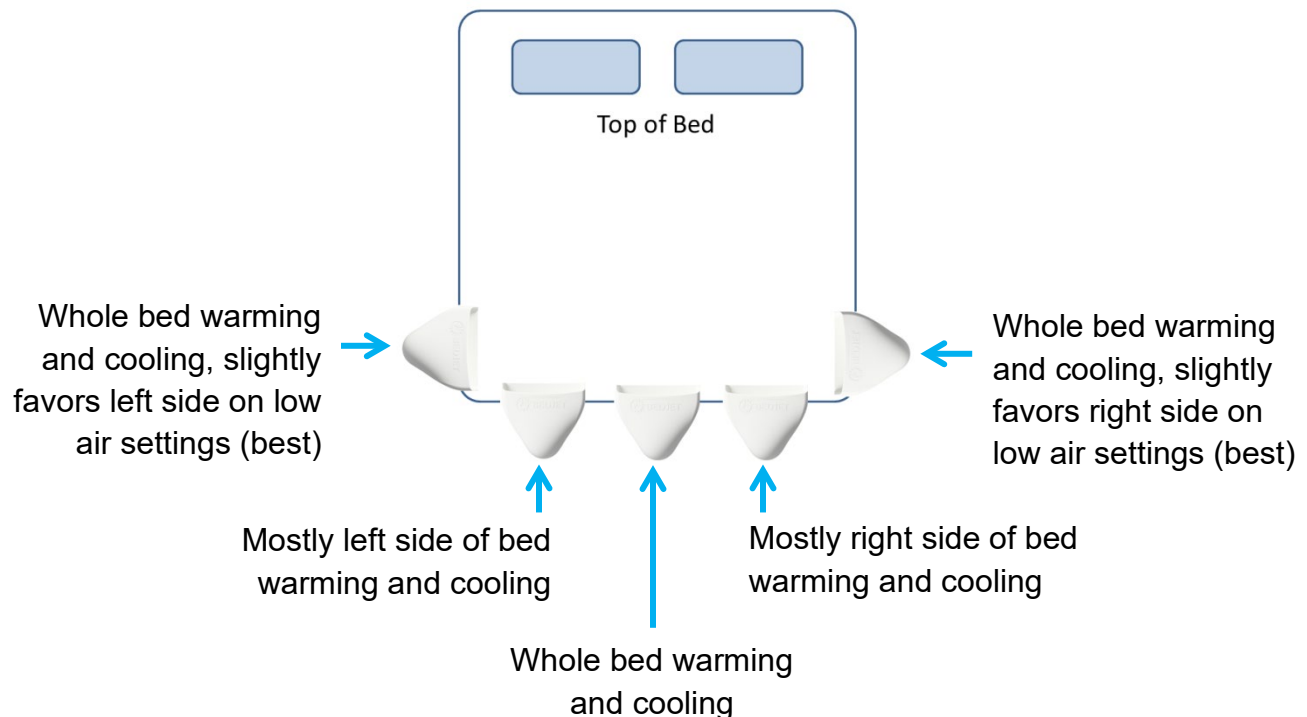
## *BedJet Using Your Own Sheets:*

### **SKIP THIS PAGE IF USING BEDJET CLOUD SHEET**

- 3) If you are using your own sheets with the BedJet, determine the best location on your bed to install your Mattress Mount Assembly, which holds the Air Nozzle and Air Hose in place. **Skip this step if using the BedJet Cloud Sheet.** You can locate your BedJet nearly anywhere except the head of the bed. Recommended locations are below; it's good to experiment with these locations over a few nights to learn what works best for you.



Air Nozzle





# USER MANUAL – BEDJET 3 & BEDJET 3 MINI

Questions? Email [info@bedjet.com](mailto:info@bedjet.com) or call (401) 404-5250

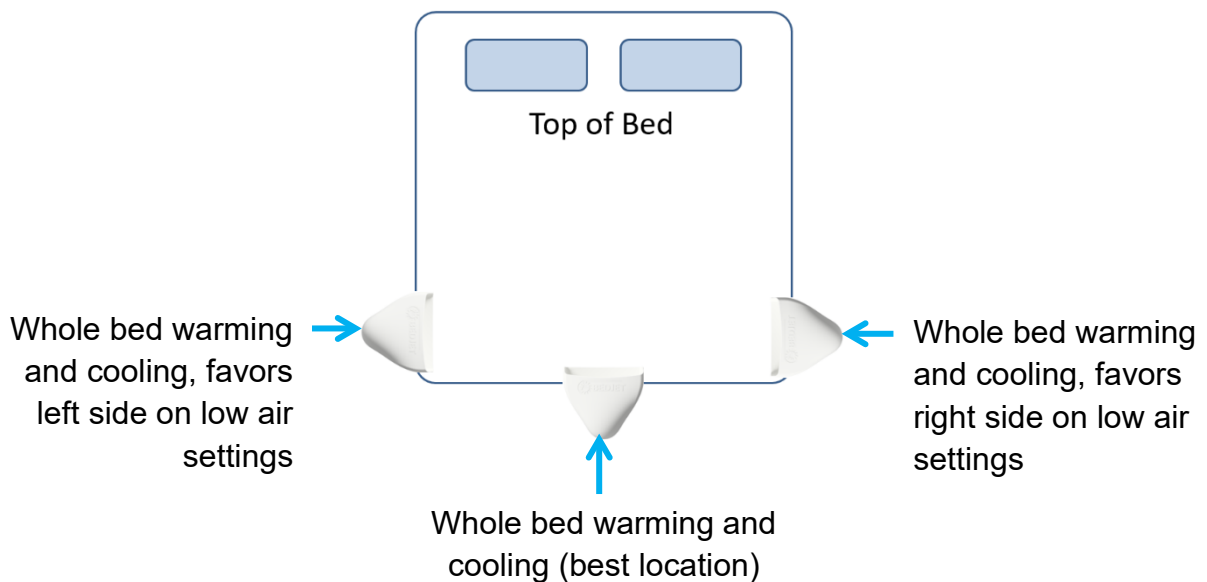
We are here to help, please call us for advice!

## *BedJet Using a Cloud Sheet*

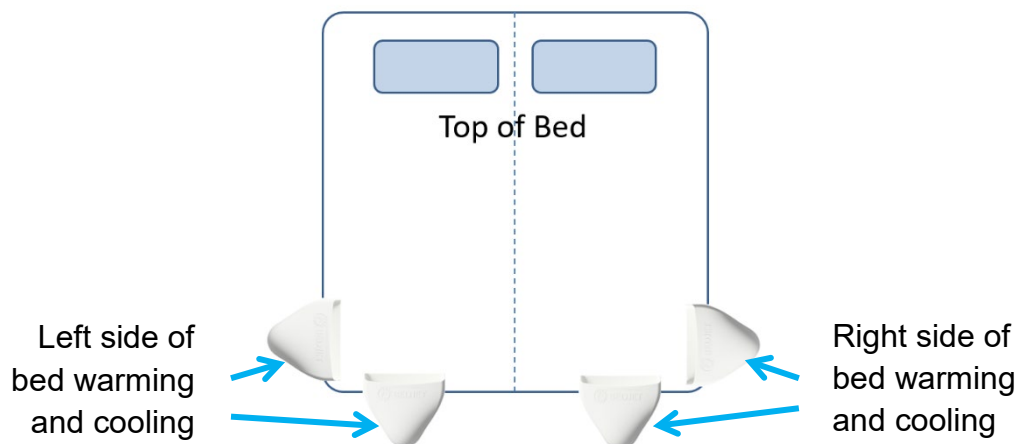
### **SKIP THIS PAGE IF USING YOUR OWN SHEETS**

- 4) If installing your BedJet with the Cloud Sheet, determine the best location on your bed to install your Mattress Mount Assembly, which will hold the Air Nozzle and Air Hose in place. The Air Nozzle will insert into special sewn openings on the Cloud Sheet. Locations to align with Cloud Sheet sewn openings are below:

#### SINGLE ZONE CLOUD SHEET WITH 1 BEDJET



#### DUAL ZONE CLOUD SHEET WITH 1 OR 2 BEDJETS



# USER MANUAL – BEDJET 3 & BEDJET 3 MINI

Questions? Email [info@bedjet.com](mailto:info@bedjet.com) or call (401) 404-5250

We are here to help, please call us for advice!

- 5) Slide the Mattress Mount base under your mattress in the location identified in Step 3 or Step 4. Slide the Mattress Mount base as deeply as possible under the mattress until the Mattress Mount is flush against the mattress. The Mattress Mount will be used to secure the Air Hose and Air Nozzle assembly against the side of the bed.



- 6) Assemble Air Nozzle onto the end of the Air Hose. Note that the Air Hose is extendable and can be expanded, contracted, and bent to retain any desired shape. Push the **fabric section** of the Air Hose into the Mattress Mount Hose Grip. The Hose Grip will stretch open to accept the Air Hose, holding it firmly. See photo below for correct installation.



Hose Grip or “C-clamp” grabs onto the fabric section of the Air Hose. You can also raise the hose up to 1.5” higher than shown, this will create a small gap between C-Clamp and plastic cuff on end of hose.



Hose Grip or “C-clamp” is grabbing onto the plastic cuff at the end of the Air Hose. This is incorrect and unstable and will cause you to need more height extension links than normal.



# USER MANUAL – BEDJET 3 & BEDJET 3 MINI

Questions? Email [info@bedjet.com](mailto:info@bedjet.com) or call (401) 404-5250

We are here to help, please call us for advice!

- 7) Remove or add Height Extension Links to the Mattress Mount to adjust height so that bottom of the Air Nozzle rests comfortably on the top of the mattress. When finished, the Air Nozzle should project onto the mattress surface as shown. If additional Height Extension Links are needed for unusually thick mattresses, contact BedJet support at [info@bedjet.com](mailto:info@bedjet.com) and we will be happy to send you more links complimentary and free of charge! But first, please double check you have the correct installation per step #6.



- 8) Place BedJet on the floor directly beneath the Mattress Mount. Assemble the Air Hose onto air output port of BedJet.



- 9) ***Please review safety warnings on page 28 of manual. Do not plug into power strips or extension cords.*** Plug your BedJet power cord directly into an AC outlet and press Power button. Power button should light up and BedJet will make an audible beep indicating READY. Make sure orange power light is ON before continuing.

## HELP! POWER CORD ISN'T LONG ENOUGH?

The power cord length of the BedJet is the maximum allowed under our Underwriters Laboratories electric appliance certification and should reach most outlets located near the head of the bed. If cord cannot conveniently reach a power outlet, it may be helpful to move BedJet closer to the outlet. We also offer a low-cost Air Hose extension, giving 8-feet total Air Hose length. The Air Hose extension will allow you to place the BedJet nearly anywhere under the bed or around the bed to be closer to a preferred power outlet. You can order the hose extension at [www.bedjet.com](http://www.bedjet.com).



# USER MANUAL – BEDJET 3 & BEDJET 3 MINI

Questions? Email [info@bedjet.com](mailto:info@bedjet.com) or call (401) 404-5250

We are here to help, please call us for advice!

- 10) The very best location for your BedJet is under your bed. BedJet requires a 6" clearance to fit. BedJet is designed to be an extension of your bed and certified to the same Underwriters Laboratories (UL) safety standards as electric hospital beds. If the BedJet cannot be placed under the bed, lay the BedJet on its side and tuck against the foot of the bed or side of the bed as shown.



When installing under the bed, adjust the location of the BedJet air output port to be as close as possible to the Air Nozzle. Compress length in the Air Hose so that only the shortest length of Air Hose needed is used. Avoid sharp bends in Air Hose for maximum flow.



## HELP! NOT SURE IF BEDJET CAN FIT UNDER BED?

Some bedframes with low hanging side rails may look like they cannot fit the BedJet underneath, but this is just the side rail — the under-mattress area may still have at least 6" of height clearance. In these cases, the bed frame can be lifted up and the BedJet placed underneath. As long as the mattress or frame does not rest on the BedJet and the 3" hose can fit under the low side rail, the installation is acceptable.

## HELP! WILL IT WORK WITH MY ADJUSTABLE BED FRAME?

The BedJet is power adjustable bed frame approved. It will work fine underneath adjustable bed frames, just make sure that the BedJet and Air Hose are installed in a location under the frame where the full range of frame articulation will not crush either component.



# USER MANUAL – BEDJET 3 & BEDJET 3 MINI

Questions? Email [info@bedjet.com](mailto:info@bedjet.com) or call (401) 404-5250

We are here to help, please call us for advice!

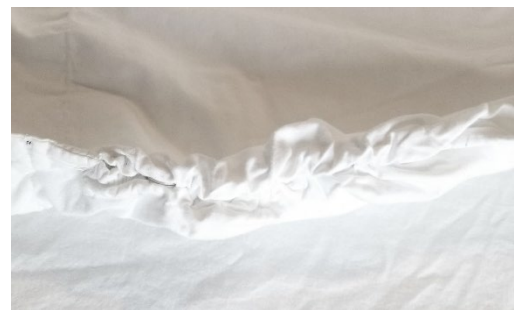
- 11) BedJet Cloud Sheet Install. **Skip ahead to Step 12 on page 14 if using BedJet with your own sheets.** Your engineered performance Cloud Sheet is as durable as your existing sheets for regular washing and will give you many years of service when properly cared for. See care label for washing instructions.

The Cloud Sheet lays on top of your body when in bed and replaces your regular top sheet. Do not place any other bedding in between the Cloud Sheet and your body. Place your normal bedding such as blankets, comforters or quilts on top of the Cloud Sheet. The Cloud Sheet works best with the weight of your existing bedding on top of it. You may keep your existing top sheets if they are placed only on top of the Cloud Sheet.

**Make sure “This Side Down” label on Cloud Sheet faces down towards the mattress. If you see this label, the Cloud Sheet is upside down.** The Cloud Sheet’s top and bottom fabric layers flow air at different rates and will not give the best experience if installed upside down.



The Cloud Sheet has several elastic openings that accept insertion of the BedJet Air Nozzle and Air Hose into the inside cavity of the sheet. The elastic openings come sealed with snap buttons. The snap buttons are hidden until the elastic opening is unbuttoned. The snap buttons may be opened at the desired elastic opening location by firmly pulling fabric on either side of opening until all snap buttons release.



Open the sealed openings closest to your Air Nozzle and Air Hose location identified in Step 4, Page 9. **Ensure all openings that will not be used have snap buttons sealed shut.**



# USER MANUAL – BEDJET 3 & BEDJET 3 MINI

Questions? Email [info@bedjet.com](mailto:info@bedjet.com) or call (401) 404-5250

We are here to help, please call us for advice!

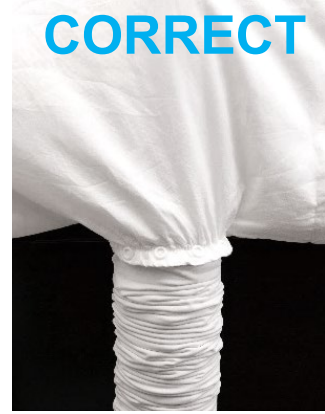
(Step 11 continued) With Cloud Sheet laid on bed, insert Air Nozzle into the opened elastic opening. Pull elastic opening as far down Air Hose as it will travel. The elastic opening **must** be pulled down far enough where the 2 sheet clamps on Hose Grip are inside the elastic opening. If you can see the sheet clamps outside Cloud Sheet, the elastic opening is not pulled down far enough and will not lock in place. See below for correct install:



Elastic opening only on nozzle, Cloud Sheet can be easily pulled off



Sheet clamps are for use with your top sheet, not when using a Cloud Sheet



Elastic opening pulled below sheet clamps, Cloud Sheet is firmly anchored

***NOTE: Excessive bedding weight on top Cloud Sheet may cause low performance. If Cloud Sheet does not puff up and inflate with BedJet at 100% air flow, then reduce bedding load on top of Cloud Sheet.***

- 12) If you are using your own sheets, cover the Air Nozzle with your sheets and/or comforter. The Air Nozzle must be covered by a sheet or comforter in order to distribute the air throughout the bed. Tucking in sheets around Air Nozzle can help keep sheets in place, or use the sheet clamps located on Mattress Mount to hold your sheets in place over the Air Nozzle so they are not pulled off easily when turning over in bed. Using the sheet clamps is highly recommended.



# USER MANUAL – BEDJET 3 & BEDJET 3 MINI

Questions? Email [info@bedjet.com](mailto:info@bedjet.com) or call (401) 404-5250

We are here to help, please call us for advice!

## Smart Remote Setup

### Remote Control Options by BedJet 3 Model

#### MODEL 3S-800NA MODEL MINI-3-800NA

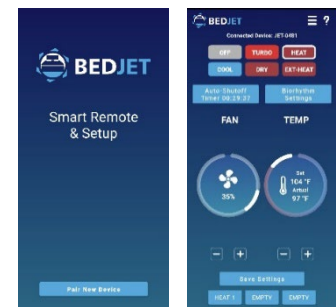
- Handheld remote control with LCD screen included with purchase.
- Free Bluetooth Smart Remote App available for Android/iOS.

#### MODEL APP-3-800NA

- Control via Bluetooth Smart Remote App for Android/iOS.
- Handheld remote control with LCD screen NOT included with purchase, available to buy as an upgrade at [bedjet.com](http://bedjet.com).

### Bluetooth Smart Remote App

The BedJet Smart Remote App includes all of the same functionality as the physical BedJet Remote, including one-touch memory keys, programmable Biorhythm cycle scheduling, and fully customizable sleep temperature settings. The App is also used for configuration of your home WiFi connection to allow updating of the BedJet firmware if needed.



#### Pairing Instructions for Android and iOS devices:

Download the BedJet 3 App from the Google Play Store (Android) or Apple App Store (iPhone/iPad). With your BedJet unit powered on, open the BedJet 3 App on your device and follow instructions to begin the pairing process. The Bluetooth symbol on the BedJet Status Display will light once the Bluetooth link is active with your smart device. *(Please note, all status lights time-out after 30 seconds of inactivity.)*

**FOR APPLE PRODUCTS: Bluetooth pairing to BedJet must be done through the BedJet app. Bluetooth connection will not pair if you try to connect through the general Settings Menu or Control Panel of your iPhone/iPad.**

### HELP! CAN'T CONNECT TO WIFI?

WiFi connection is not needed for BedJet operation. WiFi is used only if a firmware update is required. If you are having trouble connecting your BedJet to WiFi, unplug your BedJet for a full 30 seconds and re-start your phone to correct the issue. If you get a failed firmware update notice, simply trying again usually corrects the issue.



# USER MANUAL – BEDJET 3 & BEDJET 3 MINI

Questions? Email [info@bedjet.com](mailto:info@bedjet.com) or call (401) 404-5250

We are here to help, please call us for advice!

## Remote Control Setup

If you purchased a BedJet 3 Model 3S-800NA, a handheld BedJet 3 Remote Control is included in the box. If you purchased a BedJet 3 Model APP-3-800NA, a handheld remote control is *not* included, but can be purchased from [BedJet.com](http://BedJet.com) and paired at any time.

To begin, insert supplied AA batteries into Remote Control. The battery compartment is accessed by sliding the entire back cover off in the direction of the imprinted arrow (shown at right). The remote control automatically wakes up when picked up and sleeps after a period of inactivity. **Follow and complete all initial setup instructions on remote control screen.**



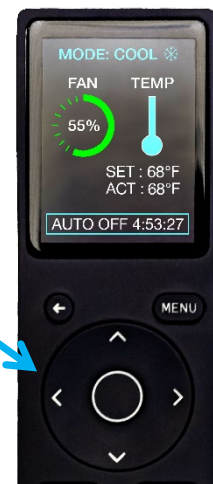
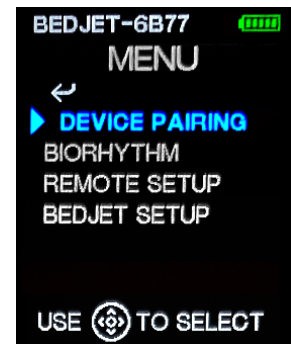
## Remote Control Settings

After initial setup, the MENU button accesses configuration settings for the remote control and any connected BedJet devices.

### MULTI DEVICE CONTROL

The smart remote can pair to up to four different BedJet 3 devices and easily switch between each one for control. For example, in a Dual Zone bundle with two BedJets, both BedJet base units can be controlled from a single remote. Just go to DEVICE PAIRING settings in the MENU to add additional devices.

To quickly switch between your added devices, use the left and right arrow keys on the center selector from the home screen.





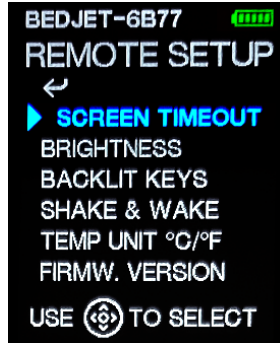
# USER MANUAL – BEDJET 3 & BEDJET 3 MINI

Questions? Email [info@bedjet.com](mailto:info@bedjet.com) or call (401) 404-5250

We are here to help, please call us for advice!

## CUSTOMIZE REMOTE

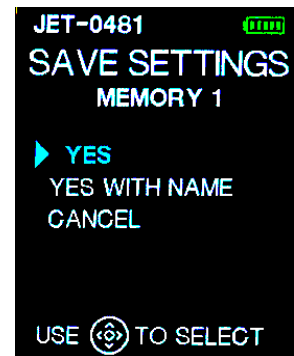
You can customize your remote control to work better for you. Under the REMOTE SETUP menu, you can adjust screen timeout time, screen brightness, and the shake & wake feature. The shake & wake setting lets you adjust the motion sensitivity of the remote control auto-wake feature. For example, if you find that knocking your night stand or setting a book down wakes the remote control, you can turn down the sensitivity to avoid this.



## MEMORY KEYS

Custom setting presets can be saved to each of the three memory keys (M1, M2, M3). Follow these steps to program any memory key to save and launch your presets:

- Start the BedJet with your desired settings of mode, fan speed, temperature, and auto-shutoff time.
- Press and hold a memory button (M1, M2, M3).
- Select “YES” to save or “YES WITH NAME” to save and name the current setting.
- Press the memory key anytime thereafter to instantly start the saved setting.



# USER MANUAL – BEDJET 3 & BEDJET 3 MINI

Questions? Email [info@bedjet.com](mailto:info@bedjet.com) or call (401) 404-5250

We are here to help, please call us for advice!

## Maintenance

The only maintenance required for the BedJet is periodic inspection and cleaning of the lifetime washable air intake filter. The lifetime washable intake filter is designed to keep dust, lint, pet hair, etc. out of the BedJet air flow.

***Inspect and clean the filter every 3 months or when visually dirty. Filter may require more frequent cleaning with shedding pets in the household.***

The filter is located behind the BedJet intake air grill. Access filter by pushing intake air grill off the unit as shown on both sides. Remove the foam filter and clean under household running water. Reinstall filter when dry and push in the air intake grill until it snaps back in place. If your filter ever gets damaged during cleaning, you can purchase replacements at [bedjet.com](http://bedjet.com).



# USER MANUAL – BEDJET 3 & BEDJET 3 MINI

Questions? Email [info@bedjet.com](mailto:info@bedjet.com) or call (401) 404-5250

We are here to help, please call us for advice!

## BedJet Operating Modes

### *Operating Mode Summary*

Mode	Best For	Regulated Temperature Range*	Maximum Auto-Shutoff Time
<b>Cool</b>	Cooling off or drying sweat	66°F to 78°F	12 hours
<b>Turbo Heat</b>	Short burst of very high heat, pre-warming the bed	109°F	10 minutes, duty limited to 10 minutes out of every 30
<b>Heat</b>	Strong warming for up to a few hours	72°F to 104 °F	Variable based on fan and temp, typically less than 4 hours
<b>Extended Heat (EXT HEAT)</b>	Moderate warming for all night use	72°F to 92°F	12 hours
<b>Dry</b>	For rapid sweat drying without being too hot or too cold	Up to 87°F	12 hours
<b>BIORHYTHM</b>	Combinations of different warming/cooling modes automatically run over the night	Various	Various

\*Lowest regulated temperature is based on bedroom ambient temperature conditions.



# USER MANUAL – BEDJET 3 & BEDJET 3 MINI

Questions? Email [info@bedjet.com](mailto:info@bedjet.com) or call (401) 404-5250

We are here to help, please call us for advice!

## Cooling Mode: Tips for Better Enjoyment

The BedJet cools via powered ventilation of fresh ambient air injected directly into the bed. This powered ventilation gently wicks away the body heat and body moisture that gets trapped in the bed by your mattress and bed covers. This evaporative and convective method of cooling has been demonstrated by infra-red cameras to provide the most rapid removal of body heat and body moisture from a bed of any product available on the market today.

BedJet cooling is not a replacement for zero air conditioning in extremely hot or humid bedroom environments but will enable reduced air conditioning thermostat settings to save money on utility bills. **Ambient bedroom air temperature must generally be below 79°F (26°C) for cooling mode to be effective.**

### Tips for Better Cooling Enjoyment

- More air flow isn't always cooler — experiment with the full range of fan speed settings to find the perfect settings for your unique set of bedding. If the sheets are lifting well off your body, air flow is set too high for best cooling efficiency.
- Experiment with different Air Nozzle locations to see what works best for you.
- Expect the sheets to balloon up a bit on high airflows. If this bothersome, place a pillow half in and half out of the sheets at the top of the bed. This will “unseal” your bedding from the air and allow it to deflate back down.
- **For customers primarily interested in cooling performance, the Cloud Sheet accessory is a highly recommended BedJet add-on that improves the cooling mode performance significantly.**
- Always place another layer of bedding over the Cloud Sheet (blanket or comforter or quilt); it performs better with some weight on it.

## HELP! FEET GETTING TOO COLD?

Try bumping up the temperature a few degrees, this will provide gentler cooling. Or try locating the Air Nozzle at different locations around the bed. Also try placing the Air Nozzle ABOVE your top sheet, and then placing another top sheet or comforter over the Air Nozzle, creating a sandwich layer for the air to flow above your body but not in your sleep layer. The very best solution if you experience cold feet is use of the Cloud Sheet. It dramatically improves the distribution of air away from your feet and up to your torso.



# USER MANUAL – BEDJET 3 & BEDJET 3 MINI

Questions? Email [info@bedjet.com](mailto:info@bedjet.com) or call (401) 404-5250

We are here to help, please call us for advice!

## HELP! DON'T LIKE FEELING THE AIR BLOWING UNDER THE COVERS?

Don't blow BedJet air directly into your sleeping layer. Try adjusting the Air Nozzle to send air above your top sheet instead of below it and make sure you have another tightly knit layer of bedding above the Air Nozzle to guide the air through a sandwiched layer. An even better solution is use of the Cloud Sheet, which dramatically improves distribution of the air and reduces the feeling of air movement.

## HELP! COOLING FELT ONLY ON YOUR FEET AND NOT ON BODY?

The BedJet requires a good quality top sheet or comforter of generally 250 thread count or higher to keep the cooling air trapped and circulating in the bed. Feet-only cooling results from use of a top sheet that is not compatible with the BedJet or use of no top sheet at all or just a loose-knit blanket. At 100% airflow your bed should have nearly all of your bedding ballooning slightly off the bed and air flow will be felt exiting at the very top of the bed from under the top sheet. You should be able to feel the cooling air on your torso. If this is not occurring, then your top sheet is too breathable or too low a thread count. Performance "cooling" sheets, highly breathable loose knit sheets, jersey knit type sheets, and blankets without any top sheet let all the air out at the bottom of the bed before it can circulate to the top of bed properly.

**Solution: Change top sheet types or utilize the BedJet Cloud Sheet.**

## Heating Mode: Turbo Heat Tips

Turbo Heat mode is best used as a pre-heater for warming your bed very quickly before getting into bed, or for single short bursts while in bed. Turbo Heat pumps the maximum amount of heat into the bed with the maximum amount of airflow and can warm the temperature of your bedding by up to 30°F (17°C) above ambient in just five minutes. **This mode has a very short default Auto-Shutoff time of 5 minutes**, as the warmth generated and noise levels are too powerful for extended use or comfortable sleeping. You can extend the shutoff time to maximum of 10 minutes.

- Do not continuously re-cycle the BedJet into Turbo Heat mode while in bed.
- Do not place body parts directly into or in front of Air Nozzle in Turbo Heat mode.
- **TURBO HEAT MODE IS SOFTWARE LIMITED TO 10 MINUTES OF USE OUT OF EVERY 30 MINUTES. ATTEMPTS TO CONTINUE OPERATION BEYOND THIS LIMIT WILL CAUSE AUDIBLE BEEPING AND BEDJET WILL DEFAULT TO REGULAR HEAT MODE.**



# USER MANUAL – BEDJET 3 & BEDJET 3 MINI

Questions? Email [info@bedjet.com](mailto:info@bedjet.com) or call (401) 404-5250

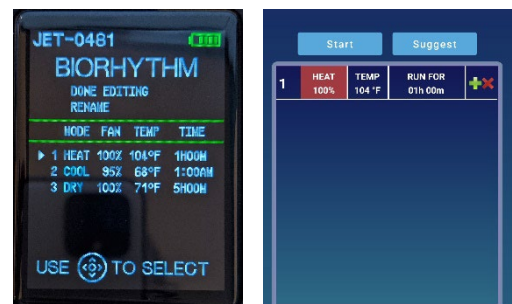
We are here to help, please call us for advice!

## Heating Mode: Tips for Better Enjoyment

- Try using the Turbo Heat mode as a pre-heater five to ten minutes before you get into bed. Turbo heat can make your bedding feel like it just came out of the dryer in only 3 minutes. Get in with as few clothes on as you can and enjoy the cuddly warmth directly on your skin. Don't be shy, wiggle around! It feels great!
- Hate getting out of a warm shower on cold winter days? Dry off briefly, or don't dry off at all — but in either case, run into the bed, turn on Turbo-Heat mode and enjoy the powerful dry heating luxury. It's like giant hair dryer for your whole body! Trust us on this one, it sounds silly, but it feels wonderful.
- The highest settings of normal Heat will become too warm for most people after some period of time in the bed. Experiment with lower settings and work your way up to what feels comfortable.
- Just like your home central HVAC forced air heat, the BedJet heating modes can lower the local humidity in the bed. For individuals who suffer from dry itchy skin in the winter, extended duration use of the BedJet heating while in bed may contribute to the dryness. Use moisturizer (your partner will love your soft skin!) or better yet, use the BedJet as a toasty pre-heater before getting in bed, or short burst heat when needed while in bed, rather than for extended periods while you sleep. **Sleep science says that you achieve deeper sleep by not having long-duration external heat sources in the bed while trying to sleep.**

## Biorhythm Sleep Sequence Function:

The BedJet 3 comes with Biorhythm Sleep Technology which allows you to pre-program up to 33 customized and unique cooling/heating settings that will automatically run over the course of the night according to your desired schedule. These settings can be programmed to run for either a specified duration of minutes/hours or until a certain clock time. Additionally, suggested biorhythm cycles that help promote sleep are also included that are based off your sex, age, and body type.



This is the most complex feature of the BedJet, and it is recommended you first learn your personal comfort levels with various modes (Turbo, Heat, Cool) and basic settings (air flow, temperature) before trying the programmable biorhythm features. **For additional information on use of this function go to [www.bedjet.com](http://www.bedjet.com) or contact BedJet support.**



# USER MANUAL – BEDJET 3 & BEDJET 3 MINI

Questions? Email [info@bedjet.com](mailto:info@bedjet.com) or call (401) 404-5250

We are here to help, please call us for advice!

## Cloud Sheet + Dual Zone Bundles

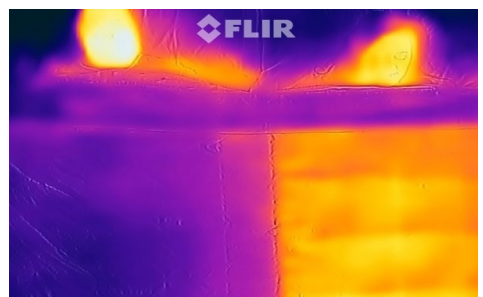
The Cloud Sheet (optional accessory) is a high quality super-soft 100% cotton bedding layer for use with one or two BedJet base units. The Cloud Sheets come with one or two separate hollow cavities (Dual Zone) which BedJet Air Nozzles plug into. Each hollow cavity gently distributes the warming or cooling air to one half of the bed. **The Cloud Sheet replaces your normal bedding top sheet** and works underneath blankets, quilts, or regular comforters. Unlike electric blankets, the Cloud sheet is just pure, soft cotton and can be washed over and over again.

When operating with a BedJet, the Cloud sheet looks wonderfully puffy, luxurious, and down-filled, but it's only filled with conditioned air from the BedJet, making it one of the softest and lightest bedding layers ever created! The Cloud Sheet can be used in the following configurations:

**Single BedJet:** One BedJet is installed on the bed and the cooling/warming power is felt over the whole bed with a Single Zone Cloud Sheet or just half the bed with a Dual Zone Cloud Sheet. This setup significantly improves the cooling experience of your BedJet. (*Note: BedJet 3 Mini not recommended for single zone setups on beds larger than Twin XL.*)

**Dual BedJets:** Two BedJet units are used, one installed on each side of the bed. Each BedJet can be independently controlled to warm or cool each side of the bed, enabling very high temperature differences for each sleeper.

**Cloud Sheets can be purchased at [www.bedjet.com](http://www.bedjet.com). A Cloud Sheet dramatically improves the performance of the BedJet in cooling mode.**



# USER MANUAL – BEDJET 3 & BEDJET 3 MINI

Questions? Email [info@bedjet.com](mailto:info@bedjet.com) or call (401) 404-5250

We are here to help, please call us for advice!

## Specifications

The BedJet has been designed to operate as a safe extension of your bed. This product has been rigorously tested by an accredited 3<sup>rd</sup> party testing lab to be qualified as a safe electric appliance. The BedJet complies with the following safety and product standards:

- Underwriters Laboratories 962: Powered Furniture, Indirectly Heated & Cooled Beds
- Underwriters Laboratories 499: Heating Appliances
- Canada CSA Standard 22.2 No 64

This device complies with Part 15 of the FCC Rules. Operation is subject to the following two conditions: (1) this device may not cause harmful interference, and (2) this device must accept any interference received, including interference that may cause undesired operation.

This equipment has been tested and found to comply with the limits for a Class B digital device, pursuant to Part 15 of the FCC Rules. These limits are designed to provide reasonable protection against harmful interference in a residential installation. This equipment generates, uses and can radiate radio frequency energy and, if not installed and used in accordance with the instructions, may cause harmful interference to radio communications.

However, there is no guarantee that interference will not occur in a particular installation. If this equipment does cause harmful interference to radio or television reception, which can be determined by turning the equipment off and on, the user is encouraged to try to correct the interference by one or more of the following measures:

- Reorient or relocate the receiving antenna.
- Increase the separation between the equipment and receiver.
- Connect the equipment into an outlet on a circuit different from that to which the receiver is connected.
- Consult the dealer or an experienced radio/TV technician for help.

This equipment complies with FCC radiation exposure limits set forth for an uncontrolled environment. This equipment should be installed and operated with a minimum distance of 20cm between the radiator & your body. This transmitter must not be co-located or operating in conjunction with any other antenna or transmitter.

Warning: Changes or modifications to this unit not expressly approved by the party responsible for compliance could void the user's authority to operate the equipment.

### CANADIAN COMPLIANCE STATEMENT:

This device contains license-exempt transmitter(s)/receiver(s) that comply with Innovation, Science and Economic Development Canada's license-exempt RSS(s). Operation is subject to the following two conditions: (1) this device may not cause interference, and (2) this device must accept any interference, including interference that may cause undesired operation of the device.

RADIATION EXPOSURE STATEMENT: This equipment complies with IC's RF radiation exposure limits set forth for an uncontrolled environment. The antenna(s) used for this transmitter must be installed and operated to provide a separation distance of at least 20 cm from all persons and must not be collocated or operating in conjunction with any other antenna or transmitter. Installers must ensure that 20cm separation distance will be maintained between the device (excluding its handset) and users.





# USER MANUAL – BEDJET 3 & BEDJET 3 MINI

Questions? Email [info@bedjet.com](mailto:info@bedjet.com) or call (401) 404-5250

We are here to help, please call us for advice!

## Troubleshooting

Use this guide to address problems with your BedJet Product. If problems cannot be resolved, please contact Customer Service at [info@bedjet.com](mailto:info@bedjet.com) or +1 (401) 404-5250. Do not return any product requiring service without first obtaining Return Authorization Number (RMA) and shipping instructions.

Issue	Possible Cause	Action
<p>BedJet keeps shutting off without a shutoff command being given or beep</p> <p><u>BedJet 3</u>: POWER LED is ON and ERROR LED is NOT ON and BedJet can be restarted normally</p> <p><u>BedJet 3 Mini</u>: POWER LED is on and no lights are blinking and BedJet can be restarted normally</p>	<ul style="list-style-type: none"><li>This may be normal. Once turned on, every mode has an automatic shutoff timer. Please see page 21 for these auto-shutoff time limits.</li></ul>	<ul style="list-style-type: none"><li>Shutoff Timer can be advanced within certain limits using timer advance button on remote or App.</li></ul>
<p>BedJet shuts off without command</p> <p><u>BedJet 3</u>: ERROR LED is blinking ON and BedJet cannot be restarted normally</p> <p><u>BedJet 3 Mini</u>: All display LEDs are blinking simultaneously and BedJet cannot be restarted normally</p>	<ul style="list-style-type: none"><li>The BedJet microprocessor has discovered a monitoring error within the system. This does not always mean your BedJet is malfunctioning and could occur if you rapidly change modes or airflow while at the same time obstructing inlets or outlets.</li></ul>	<ul style="list-style-type: none"><li>Check to make sure air filter is clean and there are no air inlet or outlet obstructions.</li><li>Unplug BedJet from outlet for <b>30 seconds</b>; if this does not solve the error, or the error occurs again, contact BedJet for support and note the error message appearing on the BedJet Smart Remote screen.</li><li>Update firmware.</li></ul>
<p>Remote control commands are not acknowledged with a beep anymore</p>	<ul style="list-style-type: none"><li>Audible beeps may have been turned off.</li></ul>	<ul style="list-style-type: none"><li>Select "Menu" on the remote</li><li>Select "BedJet Setup"</li><li>Select "Audio &amp; Lights"</li><li>Select "Audio" and then ON</li></ul>
<p><u>BedJet 3</u>: Display ring spinning purple or alternating flashing POWER/Low Power LEDs</p> <p><u>BedJet 3 Mini</u>: All display icons flashing in a rotating sequence (not simultaneous flashing)</p>	<ul style="list-style-type: none"><li>BedJet firmware is in the process of downloading and updating, normally this should take less than 3 minutes.</li></ul>	<ul style="list-style-type: none"><li>Once BedJet firmware update is completed, the light panel will stop blinking.</li><li>If this does not stop, unplug the BedJet from the wall outlet for 30 seconds before powering back on and try repeating the firmware update.</li><li>If this does not solve the issue, contact BedJet support.</li></ul>



# USER MANUAL – BEDJET 3 & BEDJET 3 MINI

Questions? Email [info@bedjet.com](mailto:info@bedjet.com) or call (401) 404-5250

We are here to help, please call us for advice!

Issue	Possible Causes	Action
BedJet Smart Remote is not connected to BedJet	<ul style="list-style-type: none"> <li>• BedJet unit may be powered off.</li> <li>• BedJet Smart Remote may be out of range.</li> </ul>	<ul style="list-style-type: none"> <li>• Ensure BedJet unit is powered on, power LED should be glowing orange.</li> <li>• Ensure BedJet Smart Remote is in the same room as the BedJet unit.</li> <li>• Try to restart the BedJet 3 unit by physically unplugging it for a minimum of 30 seconds before powering back on and attempting to connect the remote.</li> <li>• Re-pair remote control to BedJet in the MENU settings. If this does not correct the issue, contact BedJet support.</li> </ul>
BedJet is on but cooling/heating or air flow not felt in bed	<ul style="list-style-type: none"> <li>• Check to make sure Air Nozzle and Air Hose are properly installed on bed, they can shift and move over time.</li> <li>• Check to make sure the bedding/sheets are not bunched up directly in front of Air Nozzle.</li> <li>• Low quality top sheets with too low thread-count or use of jersey knit type top sheet will allow air to escape before spreading through entire bed.</li> <li>• Too heavy a blanket load.</li> </ul>	<ul style="list-style-type: none"> <li>• Adjust Air Nozzle and Hose so that Air Nozzle extends at least 1 inch onto the top of the mattress.</li> <li>• Pull bedding/sheets flatter so they can allow the air to flow through the bed.</li> <li>• Make sure top layer sheet or comforter is used over Air nozzle and is 250 thread count or higher.</li> <li>• Use Cloud Sheet accessory.</li> </ul>
Unable to connect BedJet to WiFi connection	<ul style="list-style-type: none"> <li>• WiFi network may not be correct signal band.</li> <li>• WiFi Password may be incorrect.</li> </ul>	<ul style="list-style-type: none"> <li>• Ensure WiFi network is a 2.4 GHz band signal.</li> <li>• Ensure correct WiFi password is being used.</li> <li>• Try to restart the BedJet 3 unit by physically unplugging it for a minimum of 30 seconds before powering back on and attempting to connect again.</li> <li>• If this does not correct the issue, contact BedJet support.</li> </ul>
Unable to complete BedJet firmware update	<ul style="list-style-type: none"> <li>• BedJet may not be connected to WiFi network.</li> <li>• BedJet may be too far from WiFi router, weak WiFi signal.</li> </ul>	<ul style="list-style-type: none"> <li>• Ensure BedJet is connected to WiFi using BedJet 3 App.</li> <li>• Attempt to move BedJet closer to WiFi router.</li> <li>• If this does not correct the issue, contact BedJet support.</li> </ul>



# USER MANUAL – BEDJET 3 & BEDJET 3 MINI

Questions? Email [info@bedjet.com](mailto:info@bedjet.com) or call (401) 404-5250

We are here to help, please call us for advice!

Issue	Possible Causes	Action
Cloud Sheet Accessory: BedJet is on but it's not cooling or heating very well	<ul style="list-style-type: none"><li>• Check to make sure Air Nozzle is properly installed with Cloud Sheet, they can shift and move over time.</li></ul>	<ul style="list-style-type: none"><li>• Make sure Cloud Sheet elastic opening is fully installed around Air Nozzle and pulled down as far on the Air Hose as possible; the Cloud Sheet elastic opening should be below the sheet clamps.</li></ul>
BedJet cool mode is on, user feels the air but is not experiencing cooling	<ul style="list-style-type: none"><li>• Room temperature needs to be below 79°F for cooling mode to be effective.</li><li>• Air Flow setting may need adjustment.</li></ul>	<ul style="list-style-type: none"><li>• Make sure room ambient air temperature is below 79°F.</li><li>• Adjust air flow up and down through full range to see if cooling is improved.</li></ul>
BedJet is on heat mode but after 1-minute operation Air Flow feels only slightly warm and not hot	<ul style="list-style-type: none"><li>• Extreme cold ambient air temperature and too high an Air Flow setting.</li></ul>	<ul style="list-style-type: none"><li>• If room air temperature is extremely cold, the BedJet may not be able to fully warm up the air at very high air flow settings.</li><li>• Try turning down Air Flow and the output air temperature should increase to normal.</li><li>• If this does not correct the issue, then contact BedJet support.</li></ul>
BedJet heat started with warm air but then while still in heat mode started blowing cold air	<ul style="list-style-type: none"><li>• In addition to real time microprocessor control of the heat, the BedJet contains multiple mechanical thermal overheat switches for your protection. They are extremely sensitive and may have disabled the heater unit. They are self-resetting but remain open until power is removed and the unit is allowed to cool off. They may have been triggered by inlet or outlet blockages.</li></ul>	<ul style="list-style-type: none"><li>• Switch off BedJet and unplug for 5 minutes. Plug back in, run on cool mode for 1 minute and then attempt to operate the heat mode. This will help reset the thermal overheat switch.</li><li>• Check air filter to make sure it is clean, make sure there are no inlet or outlet obstructions</li><li>• If this does not solve the issue, contact BedJet support.</li><li>• If the above solves the issue but the problem repeats again later then contact BedJet support.</li></ul>



# USER MANUAL – BEDJET 3 & BEDJET 3 MINI


Questions? Email [info@bedjet.com](mailto:info@bedjet.com) or call (401) 404-5250

We are here to help, please call us for advice!

## Important Safety Instructions

**DANGER: TO REDUCE RISKS OF BURNS, ELECTRIC SHOCK, FIRE AND PERSONAL INJURY, THIS PRODUCT MUST BE USED IN ACCORDANCE WITH THE FOLLOWING INSTRUCTIONS.**

### **WARNING**

- **DO NOT** place body parts directly into or in front of the air nozzle exhaust when used on high heat setting
- **WARNING – DO NOT** use with an infant, a disabled person, a person with diminished capacity or anyone insensitive to heat, such as a person with very poor blood circulation
- **DO NOT** use with children or persons with mental or sensory handicaps or who cannot understand these warnings
- **DO NOT** use for medical, oxygen, or wet environments
- **DO NOT** cover 

### **PERSONAL INJURY COULD OCCUR**

1. Read all instructions before using this device.
2. **WARNING** – Do not use this heated bed system with any other heated – blanket, comforter, quilt, sheet, mattress pad, mattress, foot warmer, throw blanket or similar heated bedding.
3. Let power cord hang free – Do not place between mattress and foundation. Do not allow the cord to be pinched.
4. Use this device only as described in this manual. Any other use not recommended by the manufacturer may cause fire, electrical shock, or injury to persons.
5. Do not operate device unattended. Turn off or unplug when not in use.
6. **DO NOT OPERATE MORE THAN ONE BEDJET ON SAME BEDROOM AC-POWER CIRCUIT WITHOUT SETTING LOW POWER SWITCH LOCATED ON REAR OF DEVICE TO ON, OR DEVICES MAY EXCEED CIRCUIT BREAKER CAPACITY AND CAUSE POWER DISTRUPTION OR ELECTRICAL HAZARD.**
7. This appliance has a polarized plug (one blade is wider than the other). To reduce the risk of electric shock, this plug is intended to fit in a polarized outlet only one way. If the plug does not fit fully in the outlet, reverse the plug. If it still does not fit, contact a qualified electrician. Do not attempt to defeat this safety feature.
8. Always plug this device directly into a wall outlet/receptacle. Never use with an extension cord or relocatable power tap (outlet/power strip).



# USER MANUAL – BEDJET 3 & BEDJET 3 MINI

Questions? Email [info@bedjet.com](mailto:info@bedjet.com) or call (401) 404-5250

We are here to help, please call us for advice!

9. Do not operate this device with a damaged cord or plug or after the device malfunctions or has been dropped or damaged in any manner. Return device to authorized service facility for examination, electrical or mechanical adjustment or repair.
10. To disconnect device, make sure device is not currently operating in heat or cool mode, turn Power Switch to OFF, then remove plug from outlet.
11. Always unplug device when not in regular use. Unplug power cord before servicing or moving the device.
12. Do not insert or allow fingers or foreign objects to enter any ventilation or exhaust opening as it may cause an electric shock, fire, or damage the device. Do not block or tamper with the device in any manner while it is in operation.
13. Do not block air intakes or exhaust in any manner. Do not place unit on soft surfaces, like a bed, where openings may become blocked.
14. This device has hot and arcing or sparking parts inside. Do not use the BedJet in areas where gasoline, paint, or flammable liquids are used or stored. It must NOT be used in potentially dangerous locations such as flammable, explosive, chemical-laden or wet atmospheres. This device is intended for residential bedroom use ONLY.
15. This device is not intended for use in wet or damp locations. This device is **NOT INTENDED** for use in bathrooms, laundry areas and similar indoor locations. Do not use this heater in the immediate surroundings of a bath, a shower or a swimming pool. Never locate the device where it may fall into a bathtub or other water container. Do not immerse BedJet in water.
16. Do not use device outdoors.
17. Keep the cord away from heated surfaces.
18. Do not operate where aerosol (spray) products are being used or where oxygen is being administered.
19. Do not run cord under carpeting. Do not cover cord with throw rugs, runners, or similar coverings. Do not route cord under furniture or appliances. Arrange cord away from traffic area and where it will not be tripped over.
20. Check your BedJet cord and plug connections:
  - a) Faulty wall outlet connections or loose plugs can cause the outlet or plug to overheat. Be sure the plug fits tight in the outlet.
  - b) Heaters draw more current than small appliances, overheating of the outlet may occur even if it has not occurred with the use of other appliances.
  - c) During use check frequently to determine if your plug outlet or faceplate is HOT!
  - d) If so, discontinue use of the heater and have a qualified electrician check and/or replace the faulty outlets.
21. For household use only.



# USER MANUAL – BEDJET 3 & BEDJET 3 MINI

Questions? Email [info@bedjet.com](mailto:info@bedjet.com) or call (401) 404-5250

We are here to help, please call us for advice!

22. Children of less than 3 years should be kept away unless continuously supervised. Children aged from 3 years and less than 8 years shall only switch on/off the appliance provided that it has been placed or installed in its intended normal operating position and they have been given supervision or instruction concerning use of the appliance in a safe way and understand the hazards involved.
23. Children aged from 3 years and less than 8 years shall not plug in, regulate and clean the appliance or perform user maintenance.
24. Children should be supervised to ensure that they do not play with the appliance.
- 25. CAUTION — Some parts of this product can become very hot and cause burns. Particular attention has to be given where children and vulnerable people are present.**
26. Heater must not be located immediately below a socket outlet.
27. If the supply cord is damaged, it must be replaced by the manufacturer, its service agent, or similarly qualified persons in order to avoid a hazard.
28. This appliance is not intended for use by persons (including children) with reduced physical, sensory or mental capabilities, or lack of experience and knowledge, unless they have been given supervision or instruction concerning use of the appliance by a person responsible for their safety.

**WARNING: REDUCE THE RISK OF FIRE OR ELECTRIC SHOCK – DO NOT USE THIS DEVICE WITH ANY SOLID-STATE SPEED CONTROL DEVICES.**

## THIS DEVICE IS A DOUBLE INSULATED PRODUCT: SERVICING OF DOUBLE-INSULATED PRODUCTS

In a double-insulated product, two systems of insulation are provided instead of grounding. No grounding means is provided on a double-insulated product, nor is a means for grounding to be added to the product. Servicing a double-insulated product requires extreme care and knowledge of the system and is to be done only by qualified service personnel. Replacement parts for a double-insulated product must be identical to the parts they replace. A double-insulated product is marked with the words DOUBLE INSULATION or DOUBLE INSULATED. The symbol (square within a square) is also able to be marked on the product.

## MANUFACTURER INFORMATION:

**BEDJET LLC**

**17 Connell Highway**

**Newport, RI 02840 USA**

**Phone: +1 (401) 404-5250**

**Email: [info@bedjet.com](mailto:info@bedjet.com)**

## SAVE THESE SAFETY INSTRUCTIONS



# USER MANUAL – BEDJET 3 & BEDJET 3 MINI

Questions? Email [info@bedjet.com](mailto:info@bedjet.com) or call (401) 404-5250

We are here to help, please call us for advice!

## Warranty

BEDJET LLC gives to the original purchaser (“the purchaser”) of a new BedJet (“the product”) this limited express warranty which covers any defects in materials or workmanship in the product under normal use. Except for this limited express warranty and any implied warranties under applicable law, BEDJET LLC makes no express or implied representations or warranties, either in this document or in any of its instruction manuals, product packaging, or other materials accompanying or used in conjunction with sale or marketing of the product.

### **DURATION OF WARRANTY**

This limited express warranty, and any implied warranties (including implied warranties of merchantability and fitness for a particular purpose) on the product **will be for two (2) years from the documented date of purchase**, as noted below. Coverage terminates if the purchaser sells, disposes of, or otherwise transfers the product.

**During the two years** following the documented date of purchase, BEDJET LLC will repair or replace any product or part(s) that are defective in either materials or workmanship to include parts, labor, and delivery back to the purchaser at the expense of BEDJET LLC. Delivery charges are covered under this warranty only for the continental United States.

### **EXCLUSIONS OF COVERAGE**

This limited express warranty is conditioned upon proper use of the product by the purchaser. Any problem with the product that is caused by abuse, misuse, and operation contrary to or inconsistent with the written instructions or an act of God (such as a flood) is not covered. BEDJET LLC does not have any obligations if our inspection reveals that the product has been altered, modified, damaged, subjected to or involved in an accident, disassembled, repaired or attempted to be repaired by someone other than us, or used in a manner inconsistent with its intended purpose.

Indirect, special, incidental or consequential damages (including any lost revenues, loss of use or lost profits) are not recoverable under the warranty, or with respect to the sale or use of the product. In no event will our entire liability to you exceed the purchase price actually paid by you for the product, or any defective portion thereof, whichever is less. This limitation does not apply to any claims for personal injury. Also, because some states do not allow, or restrict, limitations of incidental or consequential damages, some or all the foregoing may not apply to you.

### **What Are Your Rights Under State Law and Other Considerations?**

This warranty, and any unresolved claims and disputes between you and BEDJET LLC shall be governed by and subject to the laws (exclusive of conflict-of-law provisions) of the State of Rhode Island, which shall also be the exclusive venue and jurisdiction for all such claims and disputes. All claims against BEDJET LLC must be brought within three (3) months from the time they arise. As some states do not allow, or restrict, limitations on how long an implied warranty lasts, some or all of the foregoing may not apply to you. This warranty gives you specific legal rights, and you may also have other rights that vary from state to state. Other than as expressly set forth above, BEDJET LLC does not authorize any agent or representative to assume any obligation or liability here under. **IF YOU DO NOT AGREE WITH THE ABOVE TERMS YOU MAY RETURN YOUR PRODUCT FOR A FULL REFUND WITHIN 30 DAYS AFTER PURCHASE.**

